

Camp. It. Seniores 2020 - San Lazzaro Bologna



Oil Pattern Distance: 42 Feet **Reverse Brush Drop:** 34 Feet **Oil Per Board:** 45 uL
Forward Oil Total: 16.875 mL **Reverse Oil Total:** 9.315 mL **Volume Oil Total:** 26.19 mL
Forward Boards Crossed: 375 Boards **Reverse Boards Crossed:** 207 Boards **Total Boards Crossed:** 582 Boards

	Start	Stop	Loads	Speed	Crossed	Start	End	Feet	T.Oil
1	2L	2R	4	14	148	0.0	5.9	5.9	6660
2	7L	7R	1	14	27	5.9	7.8	1.9	1215
3	9L	9R	2	18	46	7.8	12.9	5.1	2070
4	10L	10R	3	18	63	12.9	20.5	7.6	2835
5	11L	11R	3	18	57	20.5	28.1	7.6	2565
6	12L	12R	2	18	34	28.1	33.2	5.1	1530
7	2L	2R	0	22	0	33.2	37.0	3.8	0
8	2L	2R	0	26	0	37.0	42.0	5.0	0

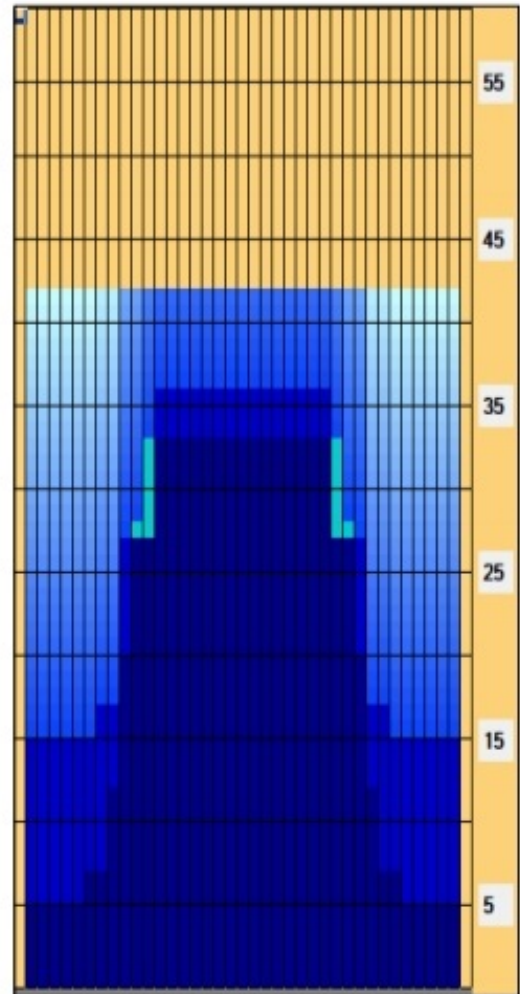
Forward Reverse More

	Start	Stop	Loads	Speed	Crossed	Start	End	Feet	T.Oil
1	2L	2R	0	30	0	42.0	36.0	-6.0	0
2	13L	13R	3	22	45	36.0	26.7	-9.3	2025
3	10L	10R	3	22	63	26.7	17.4	-9.3	2835
4	8L	8R	1	18	25	17.4	14.9	-2.5	1125
5	2L	2R	2	18	74	14.9	9.8	-5.1	3330
6	2L	2R	0	14	0	9.8	0.0	-9.8	0

Forward Reverse More

Conditioner:
 Type In or Select One
TransferType:
 Type In or Select One

- Forward
- Reverse
- Combined
- Buff



Item Description	3L-7L:18L-18R Outside Track:Middle	8L-12L:18L-18R Middle Track:Middle	13L-17L:18L-18R Inside Track:Middle	18L-18R:17R-13R Middle: Inside Track	18L-18R:12R-8R Middle:Middle Track	18L-18R:7R-3R Middle:Outside Track
Track Zone Ratio	3.87	1.62	1	1	1.62	3.87

